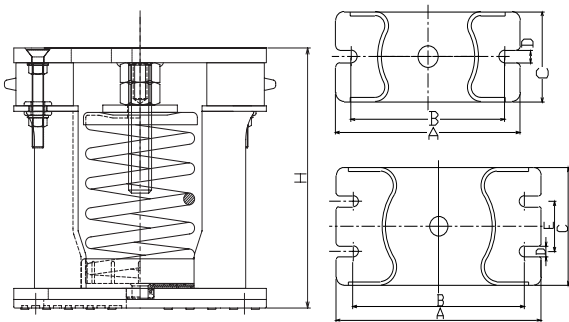
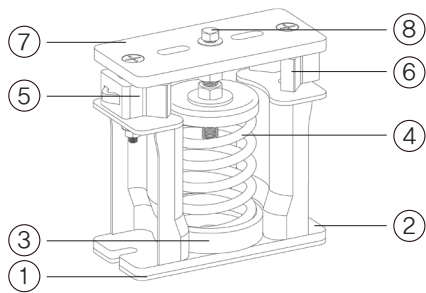


# FSL2 Spring Mount (Deflection: 50mm)



## ■ Features

As a type of FSL series, it uses SMA2 type (static deflection of 50mm) and prevents damage and distortion of the equipment and pipe. The upper housing (compression plate) has a restraint bolt and level bolt, while the CR-type acoustical non skid pad on the bottom is to prevent the transfer of high-frequency vibration).

## ■ Usage

- ◆ For refrigerator of reciprocating and turbo types
- ◆ For cooling towers
- ◆ For other large pieces of equipment of which weight often changes

## ■ Specification

No.	Name of Components	Material	Standard
1	Non Skid Pad	CR	KS M 6617
2	Lower Housing	SS400	KS D 3503
3	Spring Seat	CR	KS M 6617
4	Coil Spring	SUP9	KS B 2402
		HSW3	KS B 2403
5	Restraint Bolt	SS400	KS B 1002
6	Space Bar	Plastic	-
7	Upper Housing	SS400	KS D 3503
8	Level Bolt	SS400	KS B 1002

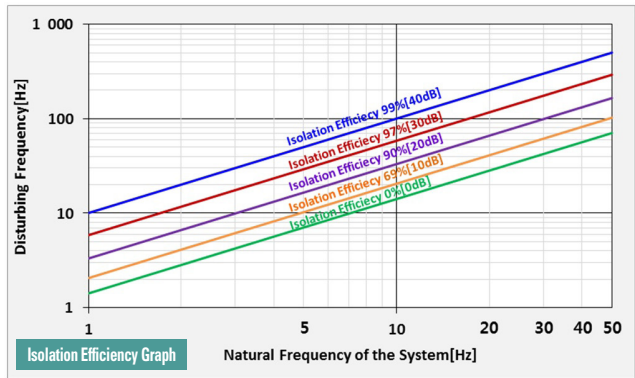
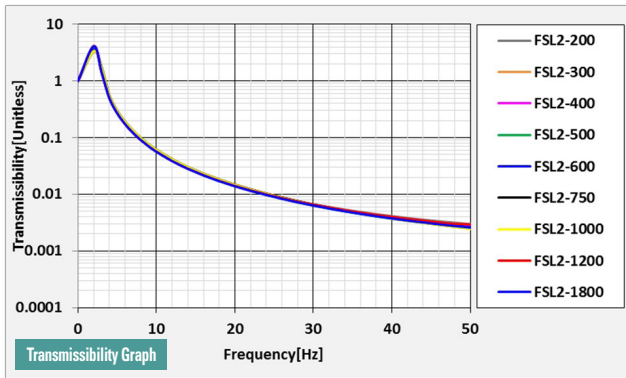
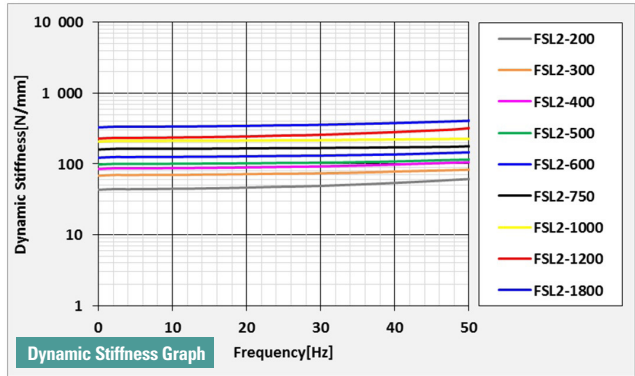
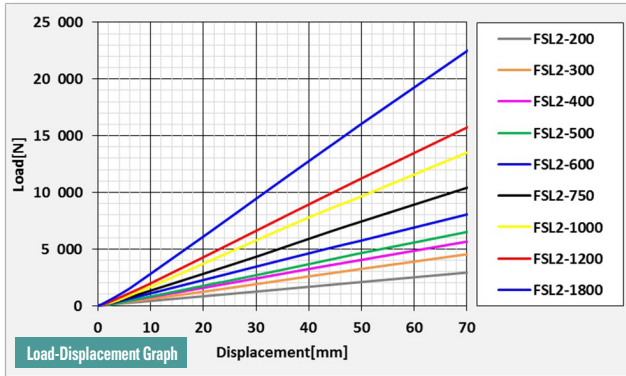
## ■ Dimension & Selection Guide

Type	Capacity (kgf)	Spring Constant (kgf/mm)	Weight (kg)	Color	Dimension(mm)						
					A	B	C	D	E	H	Level Blot
FSL2-200	200	4	10.6	White	220	183	100	14	-	212	M20X90
FSL2-300	300	6	10.7	Orange							
FSL2-400	400	8	10.9	Pink							
FSL2-500	500	10	18.0	Green							
FSL2-600	600	12	18.5	Blue							
FSL2-750	750	15	19.0	Black							
FSL2-1000	1,000	20	19.5	Yellow	280	234	150	14	64	292	M20X110
FSL2-1200	1,200	24	20.0	Red							
FSL2-1500	1,500	30	32.5	Black							
FSL2-1800	1,800	36	33.0	Blue							
FSL2-2000	2,000	40	33.5	Yellow							
FSL2-2500	2,500	50	34.0	Brown							
FSL2-3000	3,000	60	39.0	White	270	236	160	16	64	345	M24X120
FSL2-3500	3,500	70	40.0	Black							
FSL2-4000	4,000	80	42.0	Orange							

(NOTE) The specification and data are subject to change without prior to for improvement of product performance and quality.

# FSL2 Spring Mount (Deflection: 50mm)

## ■ FSL2 Test Data



## ■ Installation Features

