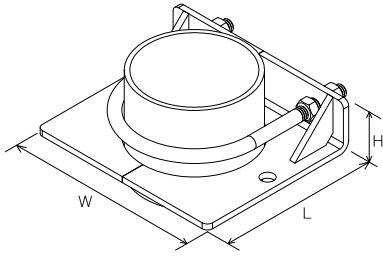
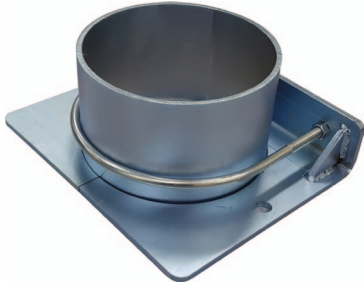


Sway Bracing (4-way Riser Pipe, Floor support type)

ND-F1



● Features

It is used when there is no structure to support a riser pipe sway brace support. Its space utilization is excellent in a narrow pit.

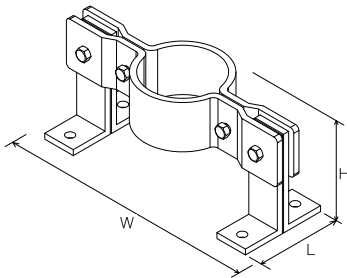
● Installation Standards

- 1) Tops of risers piping exceeding 1m in length shall be provided with a four-way brace.
- 2) When a four-way brace at the top of a riser is attached on the horizontal piping, it shall be within 600 mm of the center-line of the riser and the loads for that brace shall include both the vertical and horizontal pipe.
- 3) The distance between 4-way Sway Bracing shall not exceed 8m.

Model name	Pipe diameter	Dimension (mm)		
		W	H	L
ND-F1-150	150A	246	50	218
ND-F1-200	200A	306	70	276
ND-F1-250	250A	358		328
ND-F1-300	300A	416		382

NOTE : Specifications and dimensions are subject to change without prior notice for the enhancement of product performance and quality.

ND-F2



● Features

It is used when there is no structure to support a riser pipe sway brace support. Its space utilization is excellent in a narrow pit.

● Installation Standards

- 1) Tops of risers piping exceeding 1m in length shall be provided with a four-way brace.
- 2) When a four-way brace at the top of a riser is attached on the horizontal piping, it shall be within 600 mm of the center-line of the riser and the loads for that brace shall include both the vertical and horizontal pipe.
- 3) The distance between 4-way Sway Bracing shall not exceed 8m.

Model name	Pipe diameter	Dimension (mm)		
		W	H	L
ND-F2-150	150A	450	158	134
ND-F2-200	200A	500	165	
ND-F2-250	250A	570		
ND-F2-300	300A	630		

NOTE: Specifications and dimensions are subject to change without prior notice for the enhancement of product performance and quality.